

ICD-9 DIAGNOSIS GUIDE

Circle numbers of appropriate diagnosis. Complete section on back.

The following diagnoses are taken from the ICD-9-CM — International Classification of Diseases, 9th Revision, Volume #1, Clinical Modification. These common neuro-musculo-skeletal conditions are provided as a convenient reference, and are not intended to limit the practitioner's diagnosis.

Patient's Name _____

Date _____

CERVICAL SPINE

- 756.2 — Cervical Rib
- 723.1 — Cervicalgia
- 723.2 — Cervicocranial Syndrome
- 723.3 — Cervicobrachial Syndrome
- 353.0 — Brachial Plexus Lesions
- 353.2 — Cervical Root Lesions
- 722.0 — Disc displacement without myelopathy
- 953.0 — Injury to cervical nerve root
- 722.4 — Degeneration of cervical IVD
- 722.71 — Cervical intervertebral disc disorder with myelopathy
- 722.81 — Cervical Post Laminectomy Syndrome
- 723.0 — Spinal Stenosis, cervical
- 723.4 — Brachial Neuritis or Radiculitis NOS
- 723.5 — Torticollis, unspecified
- 723.8 — Cervical Syndrome
- 847.0 — Cervical Sprain or Strain
- 839.0 — Cervical Subluxation
- 839.01 — 1st Cervical Subluxation
- 839.02 — 2nd Cervical Subluxation
- 839.03 — 3rd Cervical Subluxation
- 839.04 — 4th Cervical Subluxation
- 839.05 — 5th Cervical Subluxation
- 839.06 — 6th Cervical Subluxation
- 839.07 — 7th Cervical Subluxation
- 721.0 — Cervical Spondylosis w/o myelopathy
- 721.1 — Cervical Spondylosis with myelopathy
- 754.1 — Congenital Torticollis
- 333.83 — Spasmodic Torticollis
- 739.1 — Cervical Segmental Dysfunction or Somatic Dysfunction

THORACIC SPINE

- 721.2 — Thoracic Spondylosis w/o myelopathy
- 721.41 — Thoracic Spondylosis with myelopathy
- 722.11 — Thoracic Intervertebral Disc Displacement w/o myelopathy
- 722.31 — Schmorl's Nodes
- 722.51 — Degeneration of thoracic or thoracolumbar IVD
- 722.72 — IVD disorder with myelopathy
- 722.82 — Thoracic Post-Laminectomy Syndrome
- 723.0 — Spinal Stenosis, thoracic region
- 724.1 — Pain in thoracic spine
- 847.1 — Thoracic Sprain/Strain
- 839.21 — Thoracic Subluxation
- 848.42 — Chondrosternal Joint Sprain/Strain
- 739.2 — Thoracic Segmental Dysfunction or Somatic Dysfunction

LUMBAR/LUMBOSACRAL SPINE

- 353.1 — Lumbosacral plexus lesion
- 722.10 — Lumbar IVD displacement without myelopathy
- 721.42 — Lumbar Spondylosis with myelopathy
- 721.3 — Lumbosacral Spondylosis without myelopathy
- 721.5 — Kissing Spine (Baastrup's Syndrome)
- 722.32 — Schmorl's Nodes
- 722.52 — Degeneration of Lumbar or Lumbosacral IVD
- 722.73 — Lumbar IVD disorder with myelopathy
- 722.83 — Lumbar Post-laminectomy Syndrome
- 724.02 — Lumbar Spinal Stenosis
- 724.2 — Lumbago
- 724.3 — Sciatica
- 724.4 — Lumbo-sacral Neuritis or Radiculitis, unspecified
- 724.5 — Backache, unspecified
- 847.2 — Lumbar Sprain/Strain
- 839.20 — Lumbar Subluxation
- 756.12 — Spondylolisthesis
- 756.17 — Spina-Bifida Occulta
- 756.11 — Spondylolysis — Lumbo/sacral region
- 756.10 — Anomaly of spine, unspecified
- 756.14 — Hemi-vertebra
- 756.15 — Vertebral Fusion, congenital
- 756.16 — Klippel-Feil Syndrome
- 846.0 — Lumbosacral Sprain/Strain
- 739.3 — Lumbar Segmental Dysfunction of Somatic Dysfunction
- 953.2 — Injury to lumbar nerve root

SACRO-ILIAC/COCCYX

- 724.6 — Disorders of sacrum (ankylosis) — (Instability)
- 724.71 — Hypermobility of coccyx
- 724.79 — Coccygodynia
- 755.69 — Fusion of sacro-iliac joint
- 720.2 — Sacroilitis — NOS
- 952.4 — Injury to Cauda Equina
- 953.3 — Injury to Sacral Nerve Root
- 953.5 — Injury to Lumbo/sacral plexus
- 839.41 — Subluxation of Coccyx
- 839.42 — Subluxation of Sacrum (Sacroiliac Joint)

- 847.3 — Sacral Sprain/Strain
- 847.4 — Coccyx Sprain/Strain
- 739.4 — Sacral somatic or segmental dysfunction

MUSCULO-SKELETAL SYSTEM — SPINE

- 714.0 — Rheumatoid Arthritis
- 715.0 — Osteoarthritis, generalized
- 715.1 — Osteoarthritis, localized, primary
- 715.2 — Osteoarthritis, localized, secondary
- 715.9 — Osteoarthritis, unspecified whether generalized or localized
- 716.1 — Traumatic Arthropathy
- 716.9 — Arthropathy, unspecified
- 720.0 — Ankylosing Spondylitis
- 720.1 — Spinal Enthesopathy
- 720.9 — Spondylitis — NOS
- 721.6 — Ankylosing Vertebral Hyperostosis
- 721.7 — Traumatic spondylopathy (Spondylitis or Kummel's Disease)
- 721.9 — Spondylosis of unspecified site
- 721.90 — Spondylosis without myelopathy
- 721.91 — Spondylosis with myelopathy
- 722.3 — Schmorl's Nodes
 - 722.30 — Unspecified region
 - 722.31 — Thoracic region
 - 722.32 — Lumbar region
- 724.0 — Spinal Stenosis other than cervical
- 724.5 — Backache, unspecified (vertebrogenic syndrome — NOS)
- 726.5 — Enthesopathy of hip region
- 728.12 — Traumatic Myositis Ossificans
- 728.4 — Laxity of ligament
- 728.5 — Hypermobility Syndrome
- 728.81 — Interstitial Myositis
- 729.1 — Myalgia and Myositis, unspecified
- 729.4 — Fasciitis, unspecified
- 733.01 — Senile Osteoporosis (post-menopausal)
- 733.0 — Osteoporosis, unspecified
 - 733.02 — Idiopathic Osteoporosis
 - 733.03 — Disuse Osteoporosis
- 733.1 — Pathological Fracture (collapse of Vertebra — NOS)
- 737.0 — Adolescent Postural Kyphosis
- 737.1 — Kyphosis (Acquired)
 - 737.10 Kyphosis (Acquired) — (Postural)
 - 737.12 Kyphosis (Post-laminectomy)
- 737.2 — Lordosis (Acquired)
- 737.3 — Kyphoscoliosis & Scoliosis
 - 737.30 Scoliosis (and Kyphoscoliosis), idiopathic
 - 737.31 Resolving Infantile Idiopathic Scoliosis
 - 737.32 Progressive Infantile Idiopathic Scoliosis
 - 737.34 Thoracogenic Scoliosis
- 737.9 — Unspecified Curvature of Spine
- 738.2 — Acquired Deformity of Neck
- 738.4 — Acquired Spondyloisthesis
- 738.6 — Acquired Deformity of Pelvis (Obliquity)
- 739.5 — Pelvic Segmental or Somatic Dysfunction
- 756.13 — Absence of vertebra, congenital
- 756.14 — Hemivertebra
- 756.15 — Fusion of Spine (vertebra) — Congenital
- 756.17 — Spina-Bifida Occulta
- 756.52 — Osteopetrosis
- 830.0 — Temporomandibular Subluxation

GENERAL NEUROMUSCULOSKELETAL

- 354.0 — Carpal Tunnel Syndrome
- 350.1 — Trigeminal Neuralgia
- 350.2 — Atypical Face Pain
- 351.0 — Bell's Palsy
- 346.1 — Common Migraine
- 346.2 — Variants of Migraine
- 781.0 — Abnormal Involuntary Movements
- 781.2 — Abnormality of Gait
- 781.3 — Lack of Coordination
- 784.0 — Headache
- 785.0 — Tachycardia — unspecified
- 785.1 — Palpitations
- 840 — Sprains & Strains of Shoulder & Upper Arm
- 841 — Sprains & Strains of Elbow & Forearm
- 842 — Sprains & Strains of Wrist & Hand
- 843 — Sprains & Strains of Hip & Thigh
- 844 — Sprains of Knee & Leg
- 845 — Sprains of Ankle & Foot
- 848.1 — Sprains of Temporomandibular Joint
- 848.5 — Sprains of Symphysis Pubis Joint
- 850.0 — Concussion with no loss of consciousness
- 850.1 — Concussion with brief loss of consciousness
- 850.2 — Concussion with moderate loss of consciousness

"E" CODES

Supplemental classification of External Causes

This section is provided to permit the classification of environmental events, circumstances, and conditions as the cause of injury or other adverse effects. Where a code from this section is applicable, it is intended that it shall be used in addition to a code from the main chapters of ICD-9-CM, indicating the nature of the condition.

MOTOR VEHICLE TRAFFIC ACCIDENTS

- E 812 Collision with another vehicle
- E 814 Collision with pedestrian
- E 815 Collision with a non-vehicle object
- E 816 Not involving collision (due to loss of control)

MOTOR VEHICLE NON-TRAFFIC ACCIDENTS

- E 821 Off road vehicular accident
- E 823 Collision with stationary object
- E 824 Accident while boarding and alighting
- E 825 Accident of other & unspecified nature

OTHER ROAD VEHICLE ACCIDENTS

- E 826 Pedal cycle accident
- E 829 Other road vehicle accidents

WATER TRANSPORT ACCIDENTS

- E 830 Accident causing submersion
- E 831 Accident causing other injury
- E 833 Fall on stairs or ladders in water transport

ACCIDENTAL FALLS

- E 880 Fall on or from stairs or steps
- E 881 Fall on or from ladders or scaffolding
- E 882 Fall from or out of building or structure
- E 883 Fall into hole or opening in surface
- E 884 Other fall from one level to another
- E 885 Fall from slipping, tripping or stumbling
- E 886 Fall from collision, pushing, by or with a person
- E 888 Other and unspecified fall

OTHER ACCIDENTS

- E 916 Struck accidentally by falling object
- E 917 Striking against or struck by objects or persons
- E 918 Caught accidentally in or between objects
- E 919 Accidents caused by machinery
- E 927 Overexertion & strenuous movements
- E 928 Other & unspecified accidental causes
- E 929 Late effects of accidental injury

DOCTOR COMPLETES THIS SECTION

Write in account of accident following wording guide to the left. Always include location of accident, such as at home, school, in park, etc., to show not a Work/Comp. injury.

No. E _____

Date of injury _____

X-Ray Findings: _____

Date symptoms first appeared or accident happened: _____

Patient ever had same or similar condition?

Yes No If yes, when and describe: _____

Patient still under your care for this condition?

Yes No

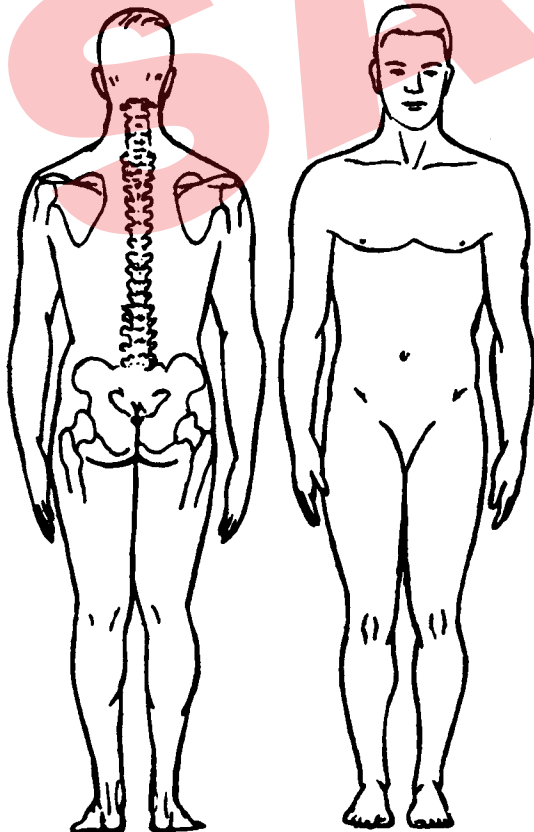
How long was or will patient be continuously totally disabled? (Unable to work)

From _____ Thru _____

Patient was house confined

From _____ Thru _____

AREAS OF PAIN AND TENDERNESS



Treatment

- 1.) _____
- 2.) _____
- 3.) _____
- 4.) _____
- 5.) _____
- 6.) _____
- 7.) _____

RVS/CPT Numbers

- 1.) _____
- 2.) _____
- 3.) _____
- 4.) _____
- 5.) _____
- 6.) _____
- 7.) _____

Doctor _____ Phone _____

Address _____

Social Security No. _____